

Mark Ma
Mark Ma
DESIGN FOR YOUR HEART



ABOUT US

The Mark Ma "Signature Series" of tires represents the very highest designing and manufacturing standards yielded from the World Class engineering team lead by Mark Ma whose incarnation of personalized customized tire technology provide the basis to meet the special demands of the ultimate users of UHP, AT and MT tires worldwide.

Since 2005, incorporating the most advanced technologies Mark Ma strives to make more innovative products reflecting the special interests and requests of the Global automotive "aftermarket enthusiast" produced in conjunction with his TRI-ACE Wheel and Tire Corporation.

Mark Ma branded products establishes the tire industry's engineering benchmark in new design, wear resistance and high-speed durability, while setting the course for specialty custom manufacturing of the future.

Mark Ma's "Signature Series" premium quality endorsement validates that his tires are now leading the way to being "America's ultimate specialty and custom-made" tire brand, while being on course to be "The World's Next Leading Brand".

Mark Ma "Signature Series" Tires



Premium Quality Endorsement



World Class Engineering



Custom Tire Technology



Benchmark Designs



Enthusiast Inspired



2002

Established.



2007

Launching its first run-flat tire, 225/55R17.



2011

Launching the world's first 305/25R32.



2013

Launching the world's first 37x13.50R26 MT size.



2018

Won in BAJA 500/BAJA 1000. Launching the world's first 405/20R28 UHP size.



2019

Launching world's largest MT tire, 44x16.50R30LT, first in the world.



2020

The journey of making differences, continues.



COMPETITIONS

2018-2019



- TOP 3 Times
- BAP 3
- MT 250 3
- Caliente 250 2
- KC Midnight Special 2
- Snore 250 5
- Rage at the River 2
- Battle at Primm 4
- Knotty Pine 250 3

2018-2019



- TOP 3 Times
- Mint 400 4
- Silver States 2
- Laughlin Desert Classic 1
- Vegas to Reno 1
- SCORE INTERNATIONAL OFF-ROAD RACING TOP 3 Times
- San Felipe 250 4
- BAJA 500 4
- BAJA 1000 3

2018-2019



- TOP 3 Times
- Slash X 1
- Slash X Ranch 1
- PCI Radio 300 1
- Transaxle Eng. 1
- McKenzies 300 3
- MDRR TOP 3 Times
- NORRA 1000 1

GLOBAL BRAND



China U.S.A. Chile Israel Japan Jordan



Kuwait New Zealand Oman Panama Philippines Russia



EU Saudi Arabia Singapore Philippines Taiwan



GLOBAL PLI

Product Liability: Global Coverage
Insured By:
JORDAN & JORDAN, USA.

Jordan & Jordan Insurance Group

STANDARD LIMITED WARRANTY

5 Years
45,000 | 60,000 miles warranty

GALLERY

Mark Ma

DESIGN FOR YOUR HEART



MARK MA



Mark Ma



INTRODUCTION



- ABOUT US 01/02
- COMPETITIONS 03
- GLOBAL BRAND 04
- GALLERY 05/08
- CONTENT 09/10

PRODUCTS INTRODUCTION

CARRERA S RUNFLAT 11/12	DAKAR R/T 19/20
CARRERA S UHP 13/14	DAKAR RALLY 21/22
DAKAR M/T III 15/16	WINTER WIZ 23/24
DAKAR A/T III 17/18	SNOW MASTER 25/26



CARRERA S
RFT Series

CARRERA S
UHP Series

DAKAR M/T III
MT Series

DAKAR A/T III
MT Series

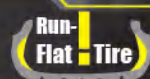
DAKAR R/T
RT Series

DAKAR RALLY
Rally Series

WINTER WIZ
Snow Series

SNOW MASTER
Snow Series

CARRERA S RUNFLAT



RUN-FLAT TIRE



- ▶ **Self-supporting Run-flat continuing mobility for at least 150km under the speed 80km/h.**
- ▶ **Low rolling resistance and fuel saving.**



REINFORCED SIDEWALL CONSTRUCTION

The most important part of RFT tires with unique compound and technology to secure safe and comfort performance in the event of air loss.

BEAD FILLER

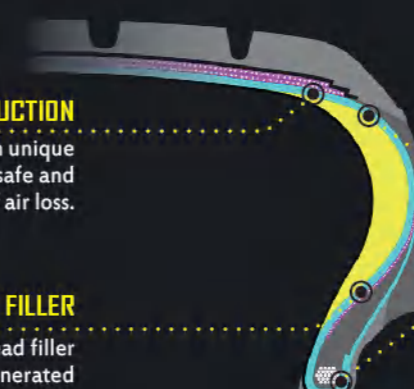
New rubber compound of the bead filler can effectively reduce the heat generated when the tire runs under pressure.

CARCASS CONSTRUCTION

The optimized carcass construction maintains excel thermal stability and endurance under the condition of low pressure.

SIDEWALL REINFORCING STRIP

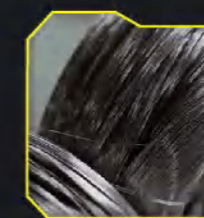
The new design improves the rigidity of the bead to restrain deformation and prevent premature bead separation from the rim, secure the driving durability under pressure.



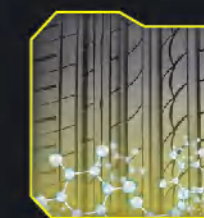
Asymmetric tread pattern design for precise handling.



Wider tread design to improve life expectancy.



Jointless and high strength steel cord to secure safety.



Improved racing tire compound application provides excellent grip.

SIZE	LOAD/SPEED INDEX	ROLLING RESISTANCE	WET ADHESION	SOUND&ROLLING
225/50R17	98YXL	C	C	70dB
225/55R17	101VXL	C	C	70dB
245/45R17	99WXL	C	C	70dB
225/45R18	95YXL	C	C	70dB
225/50R18	99VXL	C	C	70dB
245/40R18	97WXL	C	C	70dB
245/45R18	100WXL	C	C	70dB
245/50R18	104WXL	C	C	70dB
255/45R18	103W	C	C	70dB
255/55R18	109V/WXL	C	C	70dB
275/40R18	103WXL	C	C	71dB
235/55R19	105WXL	C	C	70dB
245/40R19	100WXL	C	C	70dB
245/45R19	102WXL	C	C	70dB
255/40R19	100W	C	C	70dB
255/50R19	107V/WXL	C	C	70dB
275/35R19	100WXL	C	C	71dB
275/40R19	105WXL	C	C	71dB
225/35R20	93WXL	C	C	70dB
245/35R20	95WXL	C	C	70dB
245/40R20	99WXL	C	C	70dB
255/45R20	105W	C	C	70dB
275/30R20	97WXL	C	C	71dB
275/35R20	102WXL	C	C	71dB
275/40R20	106V/WXL	C	C	71dB
275/45R20	110VXL	C	C	71dB
315/35R20	110V/WXL	C	C	72dB

CARRERA S UHP

ULTRA HIGH PERFORMANCE TIRE



- ▶ Racing compound.
- ▶ Precise handling and better grip.
- ▶ Low noise for a quieter, more comfortable ride.



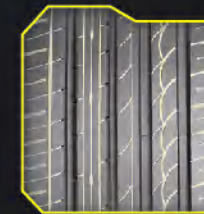
FIVE VARIABLE PITCH TREAD BLOCKS
Quieter and more comfortable.






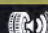


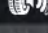

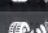


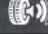
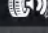




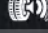
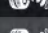

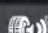

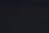
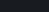
IMPROVED RACING TIRE COMPOUND
Excellent grip and better wear resistance.



FOUR CIRCUMFERENTIAL STRAIGHT GROOVES
Excellent water drainage and better skid resistance.



WIDER RIB AND EXQUISITE FINE GROOVES
Longer mileage and good high speed stability.

SIZE	LOAD/SPEED INDEX	ROLLING RESISTANCE 	WET ADHESION 	SOUND&ROLLING 
225/50R17	98YXL	C	C	 70dB
225/55R17	101VXL	C	C	 70dB
245/45R17	99WXL	C	C	 70dB
225/45R18	95YXL	C	C	 70dB
225/50R18	99VXL	C	C	 70dB
245/40R18	97WXL	C	C	 70dB
245/45R18	100WXL	C	C	 70dB
245/50R18	104WXL	C	C	 70dB
255/45R18	103W	C	C	 70dB
255/55R18	109V/WXL	C	C	 70dB
275/40R18	103WXL	C	C	 71dB
235/55R19	105WXL	C	C	 70dB
245/40R19	100WXL	C	C	 70dB
245/45R19	102WXL	C	C	 70dB
255/40R19	100W	C	C	 70dB
255/50R19	107V/WXL	C	C	 70dB
275/35R19	100WXL	C	C	 71dB
275/40R19	105WXL	C	C	 71dB
225/35R20	93WXL	C	C	 70dB
245/35R20	95WXL	C	C	 70dB
245/40R20	99WXL	C	C	 70dB
255/45R20	105W	C	C	 70dB
275/30R20	97WXL	C	C	 71dB
275/35R20	102WXL	C	C	 71dB
275/40R20	106V/WXL	C	C	 71dB
275/45R20	110VXL	C	C	 71dB
315/35R20	110V/WXL	C	C	72dB

DAKAR MIT IIII



CLASSICAL OFF ROAD TIRE



- ▶ Purpose design for M+S.
- ▶ Studdable design.
- ▶ Kevlar option.



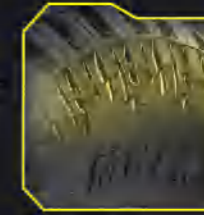
UNIQUE SHOULDER DESIGN

Created to further resist side impacts.



STUDED SHOULDER

Let the tires successfully break the ice in the harsh winter weather and climb mountains with ease.



REINFORCED SIDEWALL WITH WRAP-A-ROUND TREAD

To resist side impact forces while still providing strong traction while climbing slopes.



AN AGGRESSIVE TREAD PATTERN WITH PROVEN BLOCK ANGLES

Provide outstanding traction on all types of road conditions.



FRAME IS MADE OF HIGH STRENGTH STEEL BELT +3 LAYER POLYESTER CARCASS MATERIALS

Improve high-speed stability and durability, while maintaining high impact resistance strength.

SIZE	LI&SS	MAX LOAD (lbs)	MAX INFLATION PRESSURE (psi)	LOAD RANGE	TREAD DEPTH (1/32")	OVERALL DIAMETER (inch)	OVERALL WIDTH (inch)	TREAD CONSTRUCTION	SIDEWALL CONSTRUCTION
31X10.50R15LT	109Q	2270	50	6PR	19	31.1	10.7	3P+2S+2N	3P
33X12.50R15LT	108P	2205	50	6PR	21	33	12.8	3P+2S+2N	3P
LT245/70R16	118Q	2910	80	10PR	19	29.8	9.8	3P+2S+2N	3P
LT265/75R16	123P	3415	80	10PR	19	31.74	10.3	3P+2S+2N	3P
LT265/70R16	117/114Q	2835	65	8PR	19	30.6	10.4	3P+2S+2N	3P
LT265/70R17	121P	3195	80	10PR	19	31.74	10.7	3P+2S+2N	3P
LT265/65R17	120/117Q	3042	80	10PR	19	30.6	10.7	3P+2S+2N	3P
LT285/75R16	126P	3740	80	10PR	19	32.91	11.22	3P+2S+2N	3P
37X12.50R16.5LT	133N	4540	65	10PR	21	37	12.9	3P+2S+2N	3P
LT285/70R17	126P	3740	80	10PR	19	32.91	11.5	3P+2S+2N	3P
LT285/75R17	121Q	3195	80	10PR	19	34.02	11.58	3P+2S+2N	3P
LT295/70R17	121Q	3195	80	10PR	21	32.85	12.2	3P+2S+2N	3P
33X12.50R17LT	120Q	3042	80	10PR	21	33	12.8	3P+2S+2N	3P
35X12.50R17LT	125Q	3640	80	10PR	21	34.8	13.2	3P+2S+2N	3P
37X12.50R17LT	124Q	3525	50	8PR	21	37	12.9	3P+2S+2N	3P
LT285/70R18	127Q	3860	80	10PR	19	34.02	11.6	3P+2S+2N	3P
LT285/65R18	125Q	3640	80	10PR	19	32.6	11.5	3P+2S+2N	3P
33X12.50R18LT	118Q	2910	80	10PR	21	33	12.7	3P+2S+2N	3P
35X12.50R18LT	123Q	3415	80	10PR	21	35	12.7	3P+2S+2N	3P
255/55R19	111Q	2403	50	XL	10.5	30.2	10.7	3P+2S+2N	3P
265/50R20	112TXL	2403	42	XL	19	30.71	10.91	2P+2S+2N	2P
LT285/55R20	122Q	3305	80	10PR	19	32.4	11.8	3P+2S+2N	3P
LT295/55R20	123Q	3415	80	10PR	21	32.9	12.35	3P+2S+2N	3P
LT295/60R20	126Q	3750	80	10PR	19	34.05	11.95	3P+2S+2N	3P
33X12.50R20LT	114Q	2600	65	10PR	21	32.8	12.6	3P+2S+2N	3P
33X12.50R20LT	119Q	3000	80	12PR	21	32.8	12.6	3P+2S+2N	3P
35X12.50R20LT	121Q	3195	65	10PR	21	35	12.7	3P+2S+2N	3P
35X12.50R20LT	125Q	3640	80	10PR	21	35	12.7	3P+2S+2N	3P
33X12.50R22LT	109Q	2270	65	10PR	21	32.8	12.7	3P+2S+2N	3P
33X12.50R22LT	114Q	2600	80	12PR	21	32.8	12.7	3P+2S+2N	3P
35X12.50R22LT	117Q	2835	65	10PR	21	35	12.8	3P+2S+2N	3P
35X12.50R22LT	121Q	3195	80	12PR	21	35	12.8	3P+2S+2N	3P
35X15.50R22LT	125Q	3640	80	12PR	21	35	15.7	3P+2S+2N	3P
38X15.50R20LT	125Q	3640	65	8PR	21	37.7	15.4	3P+2S+2N	3P
38X15.50R22LT	124Q	3525	50	8PR	21	38.0	15.9	3P+2S+2N	3P
35X12.50R24LT	124Q	3525	80	10PR	21	35	12.8	3P+2S+2N	3P
35X15.50R24LT	123Q	3415	80	12PR	21	35	15.6	3P+2S+2N	3P
40X15.50R22LT	129Q	4080	65	8PR	21	39.7	15.8	3P+2S+2N	3P
40X15.50R20LT	131Q	4300	65	8PR	21	39.7	15.9	3P+2S+2N	3P
40X15.50R24LT	128P	3970	80	10PR	21	39.7	15.8	3P+2S+2N	3P
35X15.50R26LT	121Q	3195	80	12PR	21	35	15.7	3P+2S+2N	3P
40X16.50R26LT	126P	3750	80	10PR	21	39.7	16.5	3P+2S+2N	3P
38X15.50R26LT	126P	3750	80	10PR	21	38	15.8	3P+2S+2N	3P
40X15.50R28LT	126P	3750	80	10PR	21	39.7	15.9	3P+2S+2N	3P
42X16.50R28LT	128P	3970	80	10PR	21	42	16.5	3P+2S+2N	3P
44X16.50R28LT	128P	3970	80	10PR	21	44	16.5	3P+2S+2N	3P
44X16.50R30LT	126P	3750	80	10PR	21	44	16.5	3P+2S+2N	3P

DAKAR A/T III

ALL TERRAIN TIRE



- ▶ On/off-Road All-Terrain tire.
- ▶ Outstanding durability.
- ▶ Excellent snow performance.



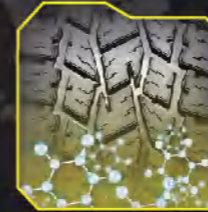
THE MAIN TRACTION TREAD PATTERN WITH LATERAL GROOVES AND SIPES

Provides superb traction performance, high efficiency of water-evacuation and wet grip capability, ensure all-season application.



AGGRESSIVE SIDEWALL AND OPEN TREAD BLOCK DESIGN

Provide tough looks and tougher performance in dirt, mud, or snow, while maintaining a quiet ride.



ALL-WEATHER WEAR-RESISTANCE TREAD COMPOUND DESIGN

Provides a powerful tread tear resistance.



THE UNIQUE 2-IN-1 PITCH PATTERN DESIGN

The unique 2-in-1 pitch pattern design will have lower noise, and enhances heat-evacuation capability.

SIZE	SIDEWALL	SPEED	MAX LOAD (lbs)	MAX INFLATION PRESSURE (psi)	PLY RATING	TREAD DEPTH (1/32")	OVERALL DIAMETER (inch)	OVERALL WIDTH (inch)	TREAD CONSTRUCTION	SIDEWALL CONSTRUCTION	M&S
31X10.50R15LT	BSW	109S	2270	50	6PR	16	30.5	10.6	2P+2S+2N	2P	2P
LT225/75R16	BSW	115/112Q	2680	80	10PR	16	29.3	8.8	2P+2S+2N	2P	2P
LT215/85R16	BSW	115/112Q	2680	80	10PR	16	30.4	8.5	2P+2S+2N	2P	2P
LT235/85R16	BSW	120/116R	3042	80	10PR	16	31.7	9.3	3P+2S+2N	2P	2P
LT235/85R16	OWL	120/116R	3042	80	10PR	16	31.7	9.3	3P+2S+2N	2P	2P
P245/70R16	BSW	106T	2094	44	/	13	29.5	9.8	2P+2S+2N	2P	2P
P255/70R16	BSW	112S	2469	44	/	13	30.16	10.7	2P+2S+2N	2P	2P
LT245/75R16	BSW	120/116S	3042	80	10PR	16	30.5	9.8	2P+2S+2N	2P	2P
LT245/75R16	OWL	120/116S	3042	80	10PR	16	30.5	9.8	2P+2S+2N	2P	2P
LT265/75R16	BSW	123/120R	3415	80	10PR	16	31.7	10.5	2P+2S+2N	2P	2P
LT265/75R16	OWL	123/120R	3415	80	10PR	16	31.7	10.5	2P+2S+2N	2P	2P
LT285/75R16	OWL	126/123R	3740	80	10PR	16	32.8	11.3	2P+2S+2N	2P	2P
P245/65R17	BSW	105T	2039	44	EX	13	29.5	9.8	2P+2S+2N	2P	2P
LT245/70R17	BSW	119/116R	3000	80	10PR	16	30.6	9.8	2P+2S+2N	2P	2P
LT245/70R17	OWL	119/116R	3000	80	10PR	16	30.6	9.8	2P+2S+2N	2P	2P
LT265/70R17	BSW	121/118R	3195	80	10PR	16	31.7	10.7	2P+2S+2N	2P	2P
LT265/70R17	OWL	121/118R	3195	80	10PR	16	31.7	10.7	2P+2S+2N	2P	2P
LT245/75R17	BSW	121/118S	3195	80	10PR	16	31.5	9.8	2P+2S+2N	2P	2P
265/65R17	BSW	116T	2756	42	XL	10.3	30.6	10.7	2P+2S+1N	2P	2P
265/65R17	OWL	116T	2756	42	XL	10.3	30.6	10.7	2P+2S+1N	2P	2P
P265/70R17	BSW	113S	2535	35	/	13	31.5	10.7	2P+2S+2N	2P	2P
LT285/70R17	OWL	126/123R	3740	80	10PR	16	32.8	11.5	2P+2S+2N	2P	2P
35X12.50R17LT	BSW	121R	3195	65	10PR	12.5	34.5	12.5	3P+2S+2N	3P	3P
35X12.50R18LT	BSW	123R	3415	80	10PR	17	34.5	12.5	2P+2S+2N	2P	2P
LT265/70R18	BSW	124/121S	3525	80	10PR	16	32.8	10.9	2P+2S+2N	2P	2P
LT275/65R18	BSW	123/120S	3415	80	10PR	16	32.1	11	2P+2S+2N	2P	2P
P275/65R18	BSW	114T	2601	44		13	32	11	2P+2S+2N	2P	2P
265/60R18	BSW	109T	2271	44		13	30.5	10.7	2P+2S+2N	2P	2P
LT285/65R18	BSW	125/122S	3640	80	10PR	17	32.7	11.5	2P+2S+2N	2P	2P
P265/65R18	BSW	112S	2469	44		13	31.5	10.7	2P+2S+2N	2P	2P
255/55R19	BSW	111HXL	2403	50	XL	15.5	30.16	10.7	2P+2S+2N	2P	2P
275/60R20	BSW	114T	2601	44		13	33	10.9	2P+2S+2N	2P	2P
275/55R20	BSW	117HXL		50	XL	13			2P	2P	2P
LT275/65R20	BSW	126/123S	3750	80	10PR	16	34.1	11	2P+2S+2N	2P	2P
LT285/55R20	BSW	122/119S	3305	80	10PR	16	32.4	11.7	2P+2S+2N	2P	2P
265/50R20	BSW	112T	2049	44	XL	10.31875	30.5	10.9	2P+2S+2N	2P	2P
35X12.50R20LT	BSW	121R	3195	80	10PR	17	34.5	12.5	2P+2S+2N	3P	3P
LT285/45R22	BSW	110/107S	2335	65	10PR	16	32.4	11.7	2P+2S+2N	2P	2P
LT305/55R20	BSW	121/118S	3195	65	10PR	16	33.2	12.4	2P+2S+2N	2P	2P
LT325/50R22	BSW	122R	3305	65	10PR	17	34.8	13.2	2P+2S+2N	2P	2P

DAKAR R/T

THE RUGGED TERRAIN TIRE



- ▶ Excellent wet & dry performance.
- ▶ Control in all seasons.
- ▶ Good treadlife.



1/3-PLY HIGH TURN-UP TOUGH POLYESTER CONSTRUCTION
Contributes to excellent durability, impact resistance, and handling with 3-ply construction on LT-Metric and Flotation sizes, and 2-ply construction on P-/Euro-Metric sizes.



AGGRESSIVE SIDEWALL DESIGNS
Enhances traction and side impact protection. Offers customization with a distinct look on each side of the tire.




OPEN, SCALLOPED SHOULDER BLOCKS
Improves off-road traction. Enhances grip in muddy, sandy, or snowy off-road conditions. Ejects mud and snow through the open channels. Reduces noise for improved driving comfort.



STONE EJECTOR
Special design in grooves to prevent damage from stones, and better self clean ability in mud road condition.

SIZE	SPEED	MAX LOAD (lbs)	MAX INFLATION PRESSURE (psi)	LOAD RANGE	TREAD DEPTH (1/32")	OVERALL DIAMETER (inch)	OVERALL WIDTH (inch)	STUD PIN SIZE	TREAD CONSTRUCTION	SIDEWALL CONSTRUCTION	SNOWFLAKE	M&S
35X13.50R24LT	118R	2910	80	10PR	19	35	13.5	TSMI #15	2P+2S+2N	2P	Y	Y
35X12.50R20LT	121R	3195	65	10PR	19	35	12.5	TSMI #15	3P+2S+2N	3P	Y	Y
35X12.50R18LT	123R	3415	65	10PR	19	35	12.5	TSMI #15	3P+2S+2N	3P	Y	Y
35X12.50R17LT	121R	3195	65	10PR	19	35	12.5	TSMI #15	3P+2S+2N	3P	Y	Y
35X12.50R22LT	121R	3195	80	12PR	19	35	12.5	TSMI #15	3P+2S+2N	3P	Y	Y
35X12.50R15LT	113R	2535	35	6PR	19	35	12.5	TSMI #15	3P+2S+2N	3P	Y	Y
LT285/70R17	121/118R	3195/2910	80	10PR	19	32.99	11.5	TSMI #15	3P+2S+2N	3P	Y	Y
LT285/65R18	125/122R	3640/3305	80	10PR	19	32.8	11.5	TSMI #15	3P+2S+2N	3P	Y	Y
LT285/55R20	122/119R	3305/3000	80	10PR	19	32.6	11.69	TSMI #15	3P+2S+2N	3P	Y	Y
LT285/75R16	126/123R	3750/3415	80	10PR	19	32.9	11.26	TSMI #15	3P+2S+2N	3P	Y	Y
LT265/70R16	121/118R	3195/2910	80	10PR	19	30.8	10.71	TSMI #15	3P+2S+2N	3P	Y	Y
LT265/65R17	120/117R	3085/2835	80	10PR	19	30.7	10.71	TSMI #15	3P+2S+2N	3P	Y	Y
LT265/60R18	119/116R	3000/2755	80	10PR	19	30.7	10.71	TSMI #15	3P+2S+2N	3P	Y	Y
LT265/50R20	116/112S	2755/2469	80	10PR	19	30.7	10.91	TSMI #15	2P+2S+2N	2P	Y	Y

DAKAR RALLY

 **CHAMPION'S CHOICE**



- ▶ All-Weather tire.
- ▶ Special block angles.
- ▶ Super body design.
- ▶ The champion's choice!



LARGE SHOULDER BLOCKS DESIGN
Large shoulder blocks increase tread pattern stiffness, reduce the tire distortion and increase road contacts in cornering.

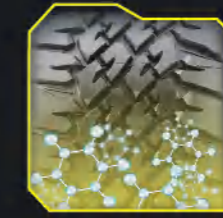


BOOMERANG SHAPED DESIGN OF TREAD CENTER
The interlocking boomerang shaped rubber lugs delivers great traction for the tire and provides a very strong wet grip.

STONE EJECTORS
Stone ejectors in the tread grooves protect the casing from stone penetrations.



RALLY COMPETITION INSPIRED YELLOW LETTER
The tough construction of 3 Plies Aramid Fiber(Kevlar) +2 Steel-Belts+3 Plies Polyamide secures a extra strong carcass under any extreme conditions.



DEDICATED RALLY COMPETITION COMPOUND
Effectively reduce the heat generated when the tire is running at high speed, so that the tire maintains the corresponding shape during high-speed or hard cornering, ensuring handling performance.

SIZE	SIDEWALL	SPEED	MAX LOAD (lbs)	MAX INFLATION PRESSURE (psi)	PLY RATING	TREAD DEPTH (1/32")	OVERALL DIAMETER (inch)	OVERALL WIDTH (inch)	TREAD CONSTRUCTION	SIDEWALL CONSTRUCTION
33X10.50R15LT	YSW	105N	2270	50	6PR	17.5	33	10.6	3P+2S+2N	3P
35X10.50R15LT	YSW	115N	2680	50	6PR	17.5	35	10.6	3P+2S+2N	3P
35X12.50R17LT	YSW	116N	2755	50	8PR	17.5	35	12.5	3P+2S+2N	3P
37X13.50R17LT	YSW	117N	2835	50	6PR	17.5	37	13.6	3P+2S+2N	3P
39X13.50R17LT	YSW	121N	3195	50	6PR	17.5	39	13.6	3P+2S+2N	3P

50th
SCORE
BAJA 500
1968 III 2018
OVERALL BUGGY



WINTER WIZ



SUV SNOW TIRE

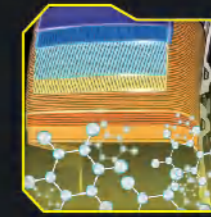


- ▶ Professional SUV winter tire.
- ▶ Wider tread.
- ▶ More traction.



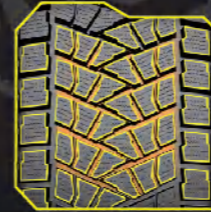
WIDER TREAD DESIGN

Wider tread design to improve life expectancy.



FULL TOUCH DESIGN

Ladder shaped tread blocks increase contact patch.



LADDER-SHAPED TREAD BLOCKS PLUS "ZIGZAG" GROOVES WITH OPTIMIZED ANGLES

increase contact patch and give more traction.



NOTCHES ON SHOULDERS

Notches on shoulders reduce the braking distance.

SIZE	LOAD / SPEED INDEX	RIM WIDTH MEASURING	OVERALL DIAMETER (Inch)	SECTION WIDTH (Inch)	MAX LOAD (lbs)	MAX PRESSURE (psi)
P265/70R18	116S	8J	32.64	10.71	2756	44
P245/55R19	103H	7 1/2J	29.65	9.96	1929	44
P245/50R20	102H	7 1/2J	29.69	9.96	1874	44
P265/60R20	115S	8J	32.52	10.71	2679	44
P275/60R20	115S	8J	32.99	10.98	2679	44
245/45R21	104HXL	8 1/2J	29.65	9.57	1984	50
255/45R21	106HXL	8 1/2J	30.04	10.04	2094	50
P275/50R22	111H	8 1/2J	32.87	11.18	2403	44
LT315/70R17	121/118Q 10PR	9 1/2J	34.41	12.72	3195/2910	65
LT305/60R20	123R 10PR	10J	34.41	12.24	3415	65
35X12.50R20LT	123R	10J	34.53	12.52	3415	65



SNOW MASTER



STUDDABLE SNOW TIRE



- ▶ Studdable snow tire.
- ▶ More traction.
- ▶ Better handling.



STUDDABLE DESIGN
Studdable Design provide outstanding performance on snow roads.



DENSE WAVE SIPES
Ensure such a good grip performance on ice and snow.



FOUR LONGITUDINAL MAIN GROOVES
Provide great drainage performance and ensure the handling and cornering performance.



RIBS IN THE BOTTOM OF THE GROOVES
Ribs in the bottom of grooves improve steering stability and handling, and increase contact area with snow and icy land to give more traction.



CHRISTMAS TREE DESIGN
Streamlined grooves from tread center to open shoulders give excellent snow discharge and drainage performance.

SIZE	LOAD/SPEED INDEX	RIM	OVERALL DIAMETER (inch)	SECTION WIDTH (inch)	TREAD DEPTH (1/32")	MAX LOAD (lbs)	MAX INFLATION PRESSURE (psi)	STUD PIN SIZE	SIZE	LOAD/SPEED INDEX	RIM	OVERALL DIAMETER (inch)	SECTION WIDTH (inch)	TREAD DEPTH (1/32")	MAX LOAD (lbs)	MAX INFLATION PRESSURE (psi)	STUD PIN SIZE
175/65R14	82T	22.8	5J	6.9	12	1050	36	TSMI #12	275/35R19	100HXL	9 1/2J	27.6	9.6	11	1764	42	TSMI #11
175/70R14	88TXL	23.8	5J	6.9	12	1235	42	TSMI #12	245/45R19	102HXL	8J	27.6	9.6	11	1874	42	TSMI #11
185/65R14	86T	23.2	5 1/2J	7.4	12	1170	36	TSMI #12	255/45R19	104HXL	9J	28.0	10.2	11	1985	42	TSMI #11
185/70R14	88T	24.3	5 1/2J	7.3	12	1235	36	TSMI #12	255/40R19	100HXL	9J	27.0	10.2	11	1764	42	TSMI #11
185/60R14	82T	22.8	5 1/2J	7.4	12	1047	36	TSMI #12	275/55R19	111H	8 1/2J	30.8	11.0	11	2337	42	TSMI #11
195/65R15	91T	24.8	6J	7.8	12	1355	36	TSMI #12	245/45R20	103HXL	8J	28.7	9.6	11	1929	42	TSMI #11
215/70R15	102TXL	26.9	6 1/2J	8.7	12	1655	36	TSMI #12	255/45R20	105HXL	8 1/2J	29.1	10.0	11	2039	42	TSMI #11
195/60R15	88T	24.0	6J	7.8	12	1235	36	TSMI #12	265/45R20	108HXL	9J	29.3	10.7	11	2205	42	TSMI #11
205/65R15	94TXL	25.2	6J	8.2	12	1475	36	TSMI #12	285/45R20	112HXL	9 1/2J	30.1	11.6	12	2469	42	TSMI #12
175/65R15	84T	24.0	5J	7.0	12	1105	36	TSMI #12	245/40R20	99HXL	8 1/2J	27.6	9.7	11	1874	42	TSMI #11
185/55R15	86TXL	23.0	6J	7.6	12	1168	42	TSMI #12	255/40R20	101HXL	9J	28.0	10.2	11	1819	42	TSMI #11
185/65R15	88T	24.2	5 1/2J	7.4	12	1235	36	TSMI #12	255/55R20	110XHL	8J	31.0	10.4	11	2337	42	TSMI #11
185/60R15	84T	23.7	5 1/2J	7.4	12	1105	36	TSMI #12	265/40R20	104HXL	9 1/2J	28.7	10.6	11	1985	42	TSMI #11
195/60R16	93TXL	25.2	6J	7.8	12	1433	42	TSMI #12	295/40R20	110HXL	10 1/2J	29.1	11.9	11	2337	42	TSMI #11
215/60R16	99TXL	25.9	6 1/2J	8.7	12	1709	42	TSMI #12	275/45R20	110VXL	9J	29.8	10.9	11	2337	42	TSMI #11
205/55R16	94TXL	25.2	6J	8.2	12	1475	42	TSMI #12	255/35R20	97VXL	9J	27	10.2	11	1609	42	TSMI #11
205/60R16	96TXL	25.6	6J	8.2	12	1387	42	TSMI #12	275/35R20	102HXL	8 1/2J	27.6	11.0	11	1874	42	TSMI #11
225/65R16	100T	27.5	6 1/2J	9.0	12	1764	36	TSMI #12	275/50R20	113HXL	8 1/2J	30.6	10.8	11	2535	42	TSMI #11
215/65R16	102T	27.0	6 1/2J	8.7	12	1874	42	TSMI #12	285/50R20	116VXL	9J	31.3	11.7	12	2756	42	TSMI #12
225/60R17	103TXL	27.6	6 1/2J	9.0	12	1929	42	TSMI #12	245/35R21	96HXL	8 1/2J	27.8	9.8	11	1387	42	TSMI #11
225/45R17	94H	25.0	7 1/2J	8.9	12	1477	42	TSMI #12	255/50R21	106HXL	8J	30.1	10.4	11	2095	42	TSMI #11
215/55R17	98H	26.3	7J	8.9	12	1653	42	TSMI #12	265/35R21	101HXL	9 1/2J	28.3	10.7	11	1819	42	TSMI #11
215/50R18	96HXL	26.3	7J	9.0	12	1387	42	TSMI #12	245/40R21	100HXL	8 1/2J	28.7	9.8	11	1764	42	TSMI #11
225/40R18	92V	25.1	8J	9.1	12	1389	42	TSMI #12	265/40R21	105HXL	9 1/2J	29.3	10.7	11	2039	42	TSMI #11
235/40R18	95VXL	25.4	8 1/2J	9.5	11	1521	42	TSMI #11	295/35R21	107HXL	10 1/2J	29.1	11.9	12	2105	42	TSMI #12
245/45R18	100HXL	26.7	8J	9.6	11	1764	42	TSMI #11	275/45R21	110HXL	9 1/2J	30.7	10.9	11	2337	42	TSMI #11
245/45R18	100HXL	26.7	8J	9.6	11	1764	42	TSMI #11	285/45R21	109H	9 1/2J	31.0	11.7	12	2271	36	TSMI #12
275/45R18	107HXL	27.6	9J	10.9	11	2105	42	TSMI #11	295/40R21	111VXL	10 1/2J	30.3	11.9	12	2403	42	TSMI #12
245/50R18	104HXL	27.7	7.5J	10.0	11	1985	42	TSMI #11	275/50R21	115HXL	9 1/2J	31.8	11.0	12	2679	42	TSMI #12
245/50R18	104HXL	27.7	7.5J	10.0	11	1985	42	TSMI #11	315/40R21	111H	11J	30.8	12.5	12	2403	36	TSMI #11
255/55R18	109HXL	29.0	8J	10.4	11	2271	42	TSMI #11	265/30R22	97HXL	9 1/2J	28.3	10.7	11	1609	42	TSMI #11
285/60R18	120TXL	31.3	8 1/2J	11.7	12	3086	42	TSMI #12	265/35R22	102HXL	9 1/2J	29.3	10.7	11	1874	42	TSMI #11
245/40R19	98VXL	26.7	8 1/2J	9.8	11	1653	42	TSMI #11	275/40R22	107HXL	9 1/2J	30.7	10.9	11	2105	42	TSMI #11
235/35R19	91HXL	25.5	8 1/2J	9.6	11	1355	42	TSMI #11	285/35R22	106HXL	10J	29.9	11.4	12	2095	42	TSMI #12
245/50R19	105HXL	28.7	7 1/2J	10.0	11	2039	42	TSMI #11	285/40R22	110HXL	10J	31.0	11.4	12	2337	42	TSMI #12
275/40R19	105HXL	27.6	9 1/2J	10.9	11	2039	42	TSMI #11	285/45R22	114HXL	9 1/2J	32.0	11.4	11	2601	42	TSMI #12
245/45R19	102HXL	27.6	8J	9.6	11	1874	42	TSMI #11	325/35R22	110H	11.5J	30.8	12.9	12	2336	36	TSMI #11
275/40R19	105HXL	27.6	9 1/2J	10.9	11	2039	42	TSMI #11	295/30R22	103HXL	10 1/2J	29.0	11.9	12	1929	42	TSMI #12
275/35R19	100HXL		9 1/2J		11	1764	42	TSMI #11									