



**BLACK BEAR TIRES**  
**NO ROAD,**  
**NO PROBLEM**



# ABOUT US



**BLACK BEAR** started its rubber technical service and business since 2013.

A professional technical team with senior technical experts from the world's leading tire companies, owns the advanced tire design and development technology.

Key business focus on cross over LT/SUV market segment, All Terrain, Mud Terrain, Rugged Terrain, UTV/ATV.

The company also works together with Taiwan Automotive Research & Testing Center (ARTC) for new tread pattern R&D as well as various lab testing and field testing.

BLACK BEAR is committed to provide the best tire solutions and exceptional driving experience for all customers!

# ADVANTAGE



### INNOVATION

Driving Force behind Sustainable Company Growth



### INTEGRITY

Principal of Our Business Behavior



### EFFICIENCY

Our Way to Win out in the Competitive Market



### WIN-WIN COOPERATION

We, Our Partners and Users

Thanks to the efforts of our team and partners, BLACK BEAR tires have been driven on in more than 180 countries and regions.



Established R&D and marketing center in Tennessee, USA, and registered the BLACK BEAR brand.



2014

Won championship in BAJA 500/BAJA 1000.



2018

Launching world's largest MT tires. 44X16.5R30LT. First in the world.



2019

44X16.5R30LT

Launching the world's first LT365/25R23 BLACK BEAR AT TIRE size which is immediately used in BRABUS AMG G63 and LAMBORGHINI URUS by the world's top modification company.



2020

LT375/25R23

Established in Surrey, England. Black Bear Tyre Co., LTD.



2013

TRI-ACE WHEEL & TIRE CORPORATION



2013



2013

37x13.5R26

Launching the world's first 37x13.5R26 MT size.



# CONTENT

## INTRODUCTION

- ABOUT US ..... 01/02
- CONTENT ..... 03/04
- CHAMPION TEAM ..... 05
- GLORY ..... 06
- AWARDS ..... 07/08
- PRODUCTS LINE ..... 09/10
- GALLERY ..... 11/14

## PRODUCTS INTRODUCTION

- LONGITUDE ..... 15/16
- All TERRAIN II ..... 17/18
- RUGGED TERRAIN ..... 19/20
- MUD TERRAIN ..... 21/22
- PREDATOR MT ..... 23/24
- BAJA RALLY ..... 25/26
- UTV & ATV (Bias) ..... 27/28
- MERCHANDISE ..... 29/30



# CHAMPION TEAM

## THE LEGENDARY RACING TEAM OF NORTH AMERICAN OFF-ROAD BAJA 500 CHAMPION TIRES

The world-class team of tire technical experts, with product R&D capabilities at a world-leading level.

The R&D center located in the United States brings together a first-class expert-level technical team in the tire industry to keep up with the pace of world tire product technology upgrades.

It has a mature R&D concept and system for high-performance green tires.

It has a series of internationally advanced R&D facilities and methods, and has established a long-term cooperative relationship with ARTC (Automotive Research and Testing Center), a well-known automobile tire testing center in Taiwan, to provide tire three-dimensional static and dynamic analog mechanical analysis, noise optimization design and various handling performance tests of tires to ensure the reliability of tire quality and technological advancement.



# TECHNICAL TEAM



## FOUNDER



**MARK MA**

Well-known technical expert in tire industry in China

## RACER



**JUSTIN DAVIS**

Well-known Off-Road racer in American BAJA



**VETERAN IN AMERICA**

# AWARDS

## EVALUATION OF INTERNATIONAL PROFESSIONAL RACER

Black Bear Tires have super anti-puncture off-road performance, and at the same time, they also have strong grip and controllable operation performance in racing.



### BAJA MATCH

2018 **San Felipe 250**

Class 1 FIRST  
Class 12 SECOND

2018 **50th BAJA 500**

Class 1 FIRST  
Baja Racing Championship

## LIST OF INTERNATIONAL COMPETITIONS



2018-2019	TOP 3 Times
Mint 400	★
Silver States	★
Laughlin Desert Classic	★
Vegas to Reno	★



2018-2019	TOP 3 Times	TOP 3 Times
BAP	★	★
MT 250	★	★
Caliente 250	★	★
KC Midnight Special	★	★
Snore 250	★	★
Rage at the River	★	★
Battle at Primm	★	★
Knotty Pine 250	★	★



2018-2019	TOP 3 Times
Slash X	★
Slash X Ranch	★
PCI Radio 300	★
Transaxle Eng.	★
McKenzies 300	★



2018-2019	TOP 3 Times
San Felipe 250	★
BAJA 500	★
BAJA 1000	★



2018-2019	TOP 3 Times
NORRA 1000	★

# GLOBAL BRAND



## BLACK BEAR HAS REGISTERED IN OVER 60 COUNTRIES/REGIONS.



China U.S.A. Canada UAE Philippines Madrid Malaysia



European Union Australia Thailand New Zealand Israel Switzerland India

## GLOBAL PLI



Product Liability: Global coverage, insured by JORDAN & JORDAN, USA.



Reliable Protection is the key to Prosperity

## STANDARD LIMITED WARRANTY



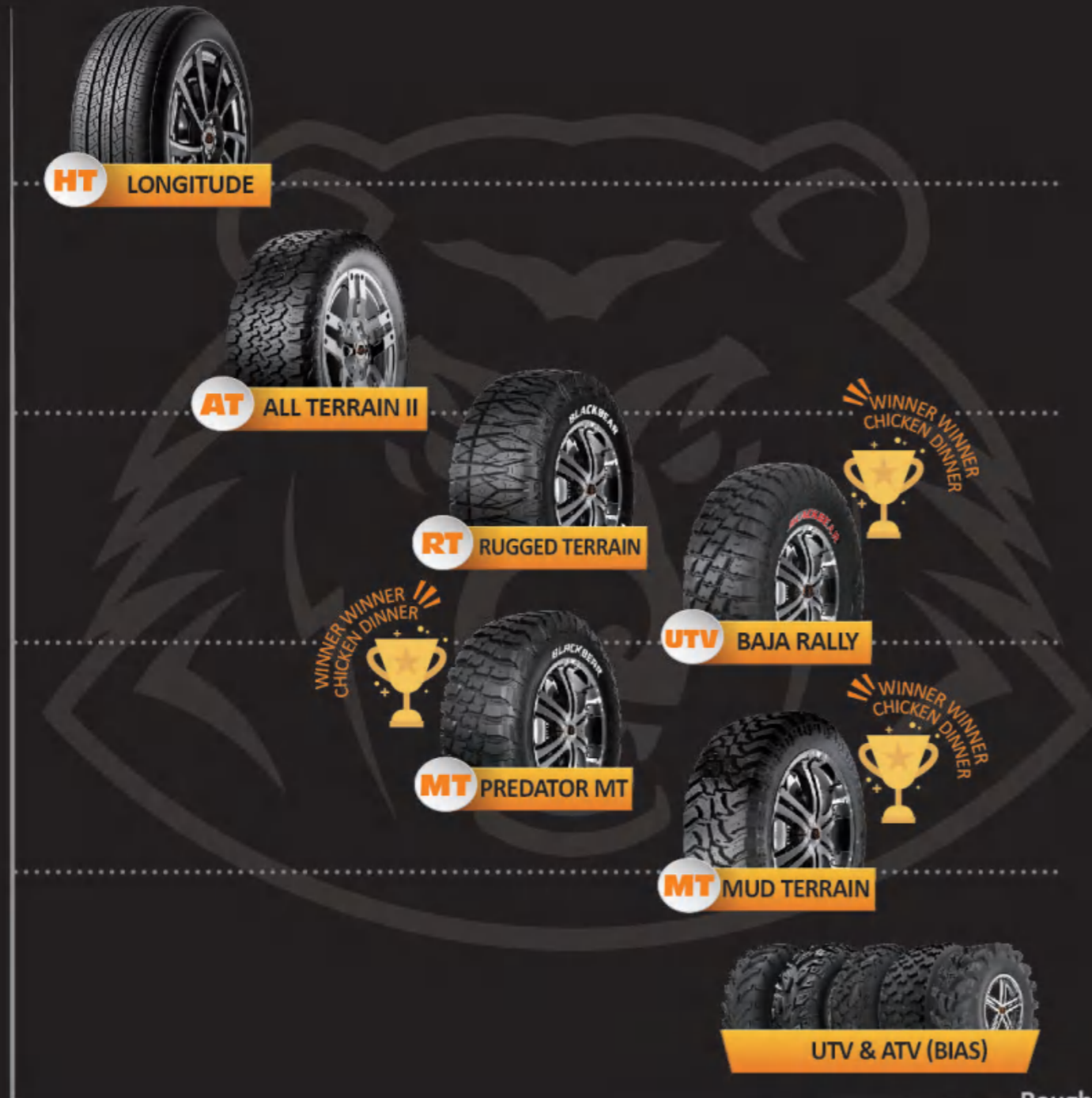
5 Years

45,000 | 60,000 miles warranty

## TIRE PRODUCT POSITIONING MAP

Black Bear Tires is a professional SUV & 4X4 off-road tire maker. Our products meet every driver's habits, every kind of cars and every terrain.

Normal road



Rough road

HT	AT	RT	UTV	MT	
LONGITUDE	ALL TERRAIN II	RUGGED TERRAIN	BAJA RALLY	PREDATOR MT	MUD TERRAIN
305/40R23 305/45R22 305/40R22 285/50R20 275/55R20 235/45R20 275/55R19 255/55R19 235/50R19 225/55R19 225/55R19 285/60R18 265/60R18 255/60R18 235/60R18 235/55R18 225/60R18 225/55R18 225/55R18 215/55R18 285/65R17 275/65R17 265/65R17 245/65R17 235/65R17 235/60R17 225/65R17 225/60R17 215/60R17 235/60R17C 265/70R16 245/70R16 235/70R16 235/60R16 225/70R16 215/65R16	LT325/50R22 LT285/45R22 LT275/40R22 P265/40R22 LT275/50R21 LT275/45R21 37X12.50R20LT 35X12.50R17LT 33X12.50R17LT LT285/70R17 33X12.50R20LT LT275/65R17 LT265/70R17 LT285/55R20 LT245/70R17 LT235/65R17 LT225/65R17 LT315/75R16 LT285/75R16 LT265/75R16 LT265/70R16 LT245/75R16 LT245/70R16 LT235/70R16 35X12.50R18LT 33X12.50R18LT LT285/65R18 LT285/60R18 LT275/70R18	LT265/70R18 LT265/60R18 LT245/60R18 LT225/60R18 37X12.50R17LT 35X12.50R17LT 33X12.50R17LT LT265/60R18 LT315/70R17 LT265/65R17 LT265/70R16 RUGGED TERRAIN+ LT285/65R18 LT285/65R18 LT285/60R18 LT265/65R18 LT285/70R17 LT285/65R17 LT265/70R17 LT285/75R16 LT265/75R16 LT285/75R16 LT265/75R16 33X12.50R15LT LT235/75R15 195R15C	40X14.50R17LT 40X14.50R17LT 40X13.50R17LT 40X13.50R17LT 32X10.00R15LT 32X9.50R15LT AT30X10.50R15 AT30X10R15 AT30X9.50R15 AT32X10R14 AT30X11R14 AT30X10R14 AT30X9R14	35X12.50R24LT 35X12.50R22LT 33X12.50R22LT 35X12.50R20LT 33X12.50R20LT 35X12.50R20LT 33X12.50R20LT 35X12.50R18LT LT285/65R18 LT275/65R18 LT275/65R18 35X12.50R17LT LT315/70R17 LT285/70R17 LT275/70R17 LT265/70R17 LT285/75R16 LT265/75R16 LT345/45R24 LT295/45R24 40X15.50R22LT 38X15.50R22LT 35X15.50R22LT 35X12.50R22LT 33X14.50R22LT 33X12.50R22LT LT345/55R22 LT295/55R22 LT285/55R22 40X15.50R20LT 38X15.50R20LT 35X12.50R20LT 33X12.50R20LT LT345/60R20 LT295/65R20	44X15.50R30LT 44X15.50R28LT 42X16.50R28LT 40X15.50R28LT 38X15.50R28LT 40X16.50R26LT 40X14.50R26LT 38X15.50R26LT 35X15.50R26LT LT375/30R26 LT345/40R26 LT295/40R26 40X15.50R24LT 35X15.50R24LT 35X13.50R24LT 40X14.50R17LT 33X14.50R24LT 37X13.50R17LT LT345/45R24 LT295/45R24 40X15.50R22LT 38X15.50R22LT 35X15.50R22LT 35X12.50R22LT 33X14.50R22LT 33X12.50R22LT LT265/65R17 LT295/55R22 37X12.50R16.5LT LT285/75R16 LT265/75R16 38X15.50R20LT LT265/70R16 35X12.50R20LT 33X12.50R20LT 33X12.50R15LT 31X10.50R15LT
UTV & ATV (Bias)					
SL288	SL308	SL318	SL386	MX618	
AT26x11-12 AT26x9-12 AT25x10-12	AT25x8-12 AT22x10-10 AT21x7-10	AT28x12-14 AT28x10-14 AT27x12-14	AT20x10-9	AT34x10-17 AT31x10-15 AT32x10-17 AT30x10-14	
AT32x10-15 AT32x10-14 AT30x10-14	AT29x10-15 AT28x10-14 AT27x11-14	AT27x9-14 AT26x11-14 AT26x9-14			



# DREAMS ARE REAL



# GALLERY



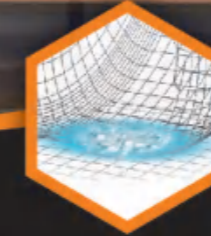


# LONGITUDE

Drive freely - to where your heart is.



Wear resistance compound extends the driving life.



Optimized design and silica compound reduce the rolling resistance and save fuel.



High-tensile carcass by two polyesters + one steel + cap construction provide excellent impact resistance and piercing resistance.



Four grooves give perfect drainage performance and self-cleaning ability. A net of sipes and grooves gives outstanding handling and noise control.



## LONGITUDE

To provide you a comfortable and quiet driving experience and bring better handling.

### FEATURES

Comfortable and quiet perfect handling.



Outstanding Traction



All Weather



Long Mileage



Low Noise

### Specification

							HT						
Range	Size	PR	LI/SI	Max. Load (kg)	Max. Air Pressure (kPa)	Standard Wheel	Range	Size	PR	LI/SI	Max. Load (kg)	Max. Air Pressure (kPa)	Standard Wheel
23	305/40R23	XL	115V	1215	340	11	18	225/55R18	XL	102V	850	340	7
	305/45R22	XL	118V	1320	340	10		215/55R18	XL	99V	775	340	7
22	305/40R22	XL	114V	1180	340	11	17	285/65R17	-	116H	1250	300	8.5
	285/50R20	XL	116V	1250	340	9		275/65R17	XL	119H	1360	340	8
20	275/55R20	XL	117W	1285	340	8.5	16	265/65R17	-	112H	1120	300	8
	235/45R20	XL	108H	1000	340	8		245/65R17	XL	111H	1090	340	8.5
19	275/55R19	-	111W	1090	300	8.5	15	235/65R17	XL	108V	1000	340	7
	255/55R19	XL	111V	1090	340	8		235/60R17	XL	108H	1000	340	7
18	235/50R19	XL	103V	875	340	7.5	14	225/65R17	-	102H	850	300	6.5
	225/55R19	-	99W	775	300	7		225/60R17	XL	103H	875	340	6.5
17	225/55R19	-	99V	775	300	7	13	215/60R17	XL	100V	800	340	6.5
	285/60R18	XL	120V	1400	340	8.5		235/60R17C	-	117/115R	1285	525	7
16	265/60R18	XL	114V	1180	340	8	12	265/70R16	-	112H	1120	300	8
	255/60R18	XL	112V	1120	340	7.5		245/70R16	XL	111T	1090	340	7
15	235/60R18	XL	107V	975	340	7	11	235/70R16	XL	109H	1030	340	7
	235/55R18	XL	108H	1000	340	7.5		235/60R16	XL	104V	900	340	7
14	225/60R18	XL	104V	900	340	6.5	10	225/70R16	XL	107H	975	340	6.5
	225/55R18	XL	102W	850	340	7		215/65R16	XL	102H	850	340	6.5

# ALL TERRAIN II

Drive freely - without fear



Reasonable hardness of tread reduces driving noise on the roads.



"S" and "C" blocks provide great traction on dry and wet roads, and good comfort at high speed.



One more ply in tread than other brands improve the anti-puncture and handling.



Zigzag blocks on the shoulders provide more traction off the roads.



## ALL TERRAIN II



Outstanding wet road performance will insure your travel in rain and snow; Long mileage will provide long drive life.

### FEATURES

Black Bear All Terrain II is perfect for all the terrains all the time all the weather.

-   
**Outstanding Wet Road Performance**
-   
**Excellent Traction**
-   
**Supreme Durability**
-   
**Long Mileage**
-   
**low Noise**

### Specification

							AT    						
Range	Size	PR	LI/SI	Max. Load (kg)	Max. Air Pressure (kPa)	Standard Wheel	Range	Size	PR	LI/SI	Max. Load (kg)	Max. Air Pressure (kPa)	Standard Wheel
22	LT325/50R22	10	122R	1500	450	10	18	LT265/70R18	10	124/121S	1600	550	8
	LT285/45R22	8	110/107S	1060	350	9.5		LT265/60R18	10	119/116S	1360	550	8
	LT275/40R22	10	110/107S	1060	450	9.5		LT245/60R18	10	115/111S	1215	550	8
	P265/40R22	-	105S	925	240	9.5		LT225/60R18	-	107/103S	975	450	6 1/2J
21	LT275/50R21	10	120/117S	1400	550	8.5	17	37X12.50R17LT	8	124R	1600	350	10
	LT275/45R21	10	113/110S	1150	450	9		35X12.50R17LT	10	121R	1450	450	10
	37X12.50R20LT	10	126R	1700	450	10		33X12.50R17LT	10	120R	1400	450	10
	35X12.50R20LT	10	121R	1450	450	10		LT285/70R17	10	121/118S	1450	550	8.5
20	33X12.50R20LT	10	114R	1180	450	10	LT275/65R17	10	121/118S	1450	550	8	
	LT305/55R20	10	121/118S	1450	450	9.5	LT265/70R17	10	121/118S	1450	550	8	
	LT285/55R20	10	122/119S	1500	550	9	LT265/65R17	10	120/117S	1400	550	8	
	LT285/50R20	8	114/110H	1180	450	9	LT245/70R17	10	119/116R	1360	550	7	
	LT275/60R20	10	123/120S	1550	550	8	LT235/65R17	8	109/105R	1030	450	7	
	LT275/55R20	10	120/117S	1400	550	8.5	LT225/65R17	8	107/103S	975	450	6.5	
	LT275/50R20	10	118/115S	1320	550	8.5	16	LT315/75R16	10	127/124R	1750	450	8.5
	LT265/60R20	10	121/118S	1450	550	8		LT285/75R16	10	126/123R	1700	550	8
LT265/50R20	10	116/112S	1250	550	8.5	LT265/75R16		10	123/120R	1550	550	7.5	
LT255/55R20	10	114/111S	1180	550	7.5	LT265/70R16		10	121/118S	1450	550	8	
19	245/50R20	XL	106T	950	290	7.5	LT245/75R16	10	120/116S	1380	550	7	
	245/55R19	XL	107T	975	290	7.5	LT245/70R16	10	118/115S	1320	550	7	
	235/55R19	XL	107T	975	290	7.5	LT235/70R16	8	110/107S	1060	450	7	
	35X12.50R18LT	10	123R	1550	450	10	185/75R16C	8	104/102S	900	475	5	
18	33X12.50R18LT	10	118R	1320	450	10	15	33X12.50R15LT	8	117Q	1285	350	10
	LT285/65R18	10	125/122S	1650	550	10		LT235/75R15	8	110/107Q	1060	450	6.5
	LT285/60R18	8	118/115H	1320	450	8.5		195R15C	8	106/104S	950	450	5.5
	LT275/70R18	10	125/122R	1650	550	8							

# RUGGED TERRAIN

On/off road performance with wear-resisting tread to go wherever your route requires.



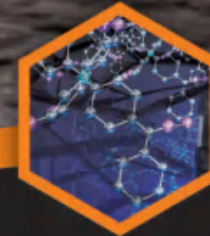
Asymmetric tread design provides extra controlling for on/off-road driving.



Intrepid Shoulder Design: Creative design of shoulder lugs embossing and make the tire more aggressive.



Special Groove Design: Engineering design of wide and narrow grooves combination delivers a comfortable.



Dedicated compound. Professional on/off-road application compound contributes excellent performance of puncture resistance, tear resistance and wear resistance, safe and secured.



# RUGGED TERRAIN

All weather tire, for high expectation of on/off road performance.

## FEATURES

Great off-road traction plus great highway performance. Dual-compound tread provide exceptional Mileage and long tread life.



Stalactite sidewall design provides additional grip in deep and rocky terrain.

## DUAL SIDEWALL DESIGN



Diamond shape sidewall design provides attractive visual impact.



Outstanding Wet Road Performance



Excellent Traction



Supreme Durability



All Weather



High Bearing Capacity

## RUGGED TERRAIN Specification

RT |  

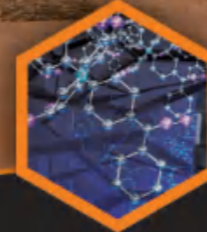
Range	Size	PR	LI/SI	Max. Load (kg)	Max. Air Pressure (kPa)	Standard Wheel
22	35X12.50R22LT	10PR	117Q	1285	450	10
	35X12.50R20LT	12PR	126Q	1700	550	10
20	LT285/55R20	10PR	122/119Q	1500	550	9
	265/50R20	XL	111Q	1090	290	8.5
18	LT265/60R18	10PR	119/116Q	1360	550	8
	LT315/70R17	10PR	125Q	1650	550	9.5
17	LT265/65R17	10PR	120/117Q	1400	550	8
	LT265/70R16	8PR	117/114Q	1285	450	8

## RUGGED TERRAIN+ Specification

Range	Size	PR	LI/SI	Max. Load (kg)	Max. Air Pressure (kPa)	Standard Wheel
18	LT285/65R18	10	125/122Q	1650	550	8.5
	LT285/65R18	8	121/118Q	1450	450	8.5
	LT285/60R18	10	122/119Q	1500	550	8.5
	LT265/65R18	10	122/119Q	1500	550	8
17	LT285/70R17	10	121/118Q	1450	550	8.5
	LT285/65R17	10	121/118Q	1450	550	8.5
	LT265/70R17	10	121/118Q	1450	550	8
16	LT285/75R16	10	126/123Q	1700	550	8
	LT285/75R16	6	116/113R	1250	350	8
	LT265/75R16	10	123/120Q	1550	550	7.5

# MUD TERRAIN

No-limits tire for serious off-road enthusiasts.



**Strong Structure:**  
The 3 polyester plies casing structure and high turn-up design make carcass stronger, providing excellent handling performance, greater endurance and high loading ability.



**Deep and Wide Grooves:**  
Thread groove design with sufficient depth and width to ensure more traction force on roads like non-paved, gravel and rugged mountain.



**Open Shoulder Design:**  
Open and rough shoulder blocks and self-cleaning rubber bar in the groove bottom will effectively and automatically clean the accumulated sludge and prevent stones.



**Sidewall Design with Artistic and Different Height Pattern:**  
It's not only for look good but also provides more traction on snow, mud and gravel road, and it also reinforces the sidewall to resist damages.



## MUD TERRAIN



The classical off road tire M+S, Studdable

### FEATURES

Sure control in mud, the tread pattern design derived from high heel boot and grooves with sufficient depth and width ensure enough traction, in snow, mud and gravel road conditions.

-   
**Outstanding Wet Road Performance**
-   
**Excellent Traction**
-   
**Supreme Durability**
-   
**All Weather**
-   
**High Bearing Capacity**

### Specification

							MT						
Range	Size	PR	LI/SI	Max. Load (kg)	Max. Air Pressure (kPa)	Standard Wheel	Range	Size	PR	LI/SI	Max. Load (kg)	Max. Air Pressure (kPa)	Standard Wheel
30	44X15.50R30LT	10PR	126Q	1700	450	13	20	LT295/60R20	10PR	126/123Q	1700	550	8.5
	44X15.50R28LT	10PR	128Q	1720	450	13		LT295/55R20	10PR	123/120Q	1550	550	9.5
	42X16.50R28LT	10PR	128P	1800	450	13		LT285/65R20	10PR	127/124Q	1750	550	8.5
	40X15.50R28LT	10PR	126P	1700	550	12		LT285/55R20	10PR	122Q	1450	550	9
28	38X15.50R28LT	10PR	126P	1620	450	12.5	LT275/55R20	10PR	121/118Q	1450	550	8.5	
	40X16.50R26LT	10PR	126P	1700	450	13	265/50R20	XL	111Q	1090	290	8.5	
	40X14.50R26LT	6PR	121Q	1450	250	12	19	255/55R19	XL	111Q	1090	290	8
	38X15.50R26LT	10PR	126P	1700	550	12		38X15.50R18LT	8PR	128Q	1800	350	12
26	35X15.50R26LT	12PR	121Q	1450	550	12.5	35X12.50R18LT	10PR	123Q	1550	550	10	
	LT375/30R26	10PR	124Q	1600	550	13	33X12.50R18LT	10PR	118Q	1320	450	10	
	LT345/40R26	10PR	125Q	1650	550	11	LT285/75R18	10PR	129/126Q	1850	550	8.5	
	LT295/40R26	10PR	120/117Q	1380	550	10.5	LT285/70R18	10PR	127/124Q	1750	550	8.5	
24	40X15.50R24LT	10PR	128P	1800	450	12	LT285/65R18	10PR	125Q	1650	550	8.5	
	35X15.50R24LT	12PR	123Q	1550	550	12.5	LT275/70R18	10PR	125/122Q	1650	550	8	
	35X13.50R24LT	10PR	118Q	1320	450	11	LT265/60R18	10PR	119/116Q	1360	550	8	
	35X12.50R24LT	10PR	124Q	1600	550	10	40X14.50R17LT	6PR	121Q	1450	250	12	
22	33X14.50R24LT	12PR	114Q	1180	550	11.5	37X12.50R17.5LT	10PR	133N	2060	450	10	
	LT375/40R24	12PR	126Q	1700	550	13	37X13.50R17LT	14PR	137M	2300	650	11	
	LT345/45R24	10PR	120Q	1400	450	11	37X12.50R17LT	8PR	124Q	1600	350	10	
	LT295/45R24	10PR	120/117Q	1380	550	10	35X12.50R17LT	10PR	125Q	1650	450	10	
20	40X15.50R22LT	8PR	127Q	1750	350	12	33X12.50R17LT	10PR	120Q	1380	550	10	
	38X15.50R22LT	8PR	124Q	1600	350	12	LT345/75R17	12PR	121Q	1950	550	11	
	35X15.50R22LT	12PR	125Q	1650	550	12.5	LT295/70R17	10PR	121/118Q	1450	550	8.5	
	35X12.50R22LT	12PR	121Q	1450	550	10	LT285/75R17	10PR	121/118Q	1450	550	8	
16	33X14.50R22LT	12PR	117Q	1285	550	11.5	LT285/70R17	10PR	126Q	1700	550	8.5	
	33X12.50R22LT	12PR	114Q	1180	550	10	LT265/70R17	10PR	121Q	1450	550	8	
	LT345/55R22	12PR	128Q	1800	550	11	LT265/65R17	10PR	120/117Q	1380	550	8	
	LT295/55R22	10PR	125/122Q	1650	550	9.5	37X12.50R16.5LT	10PR	133N	2060	450	10	
15	LT285/55R22	10PR	124/121Q	1600	550	9	LT285/75R16	10PR	126Q	1700	550	8	
	40X15.50R20LT	8PR	130Q	1900	350	12	LT265/75R16	10PR	123Q	1550	550	7.5	
	38X15.50R20LT	8PR	125Q	1650	350	12	LT265/70R16	8PR	117/114Q	1285	450	8	
	35X12.50R20LT	12PR	125Q	1650	550	10	LT245/70R16	10PR	118Q	1320	550	7	
15	33X12.50R20LT	12PR	119Q	1360	550	10	33X12.50R15LT	6PR	108P	1000	250	10	
	LT345/60R20	12PR	131Q	1950	550	11	31X10.50R15LT	6PR	109Q	1030	350	8.5	
	LT295/65R20	10PR	129/126Q	1850	550	8.5							

# PREDATOR MT

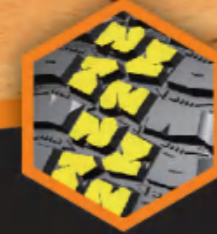
Impact performance and wear resistance.



**Huge Block Pattern Design:**  
The improved design of small ditch bottom of shoulder blocks to further strengthen the grip of the tire shoulder.



**Thicken Sidewall Design:**  
Armor-type traction sidewall pattern design, tear resistance design of the sidewall, ultra-high thickness sidewall design, max up to 10mm, armor-type sidewall.



**Tread Center with Large Block:**  
Cooperate with non-penetrating incision design to prevent slipping, enhance traction, small-angle horizontal pattern design to enhance grip, and L-shaped penetrating pattern design to strengthen torsion and traction.



**Dual Sidewall Design:**  
The asymmetric design is adopted to further strengthen the sidewall sand discharge and resist impact tearing. The slightly convex small fragments are distributed on the sidewall of the fetus, discharging sand, self-cleaning and reducing the wind noise at the same time.



## PREDATOR MT

Super toughness, natural enemy of sediment pavement, excellent grip performance, specifically for the rock slippery roads.

### FEATURES

The bionic all-weather impact-resistant patterns optimized by computers is designed to resist strong impact and can clean itself and remove silts and sand from tires.



Outstanding Wet Road Performance



Excellent Traction



Supreme Durability



All Weather



High Bearing Capacity

### Specification

Range	Size	PR	LI/SI	Max. Load (kg)	Max. Air Pressure (kPa)	Standard Wheel
24	35X12.50R24LT	10	124Q	1600	550	11
	35X12.50R22LT	12	121Q	1450	550	11
22	33X12.50R22LT	12	114Q	1180	550	11
	35X12.50R20LT	12	125Q	1650	550	11
20	33X12.50R20LT	12	119Q	1360	550	11
	35X12.50R20LT	10	122/119Q	1500	550	10
	33X12.50R20LT	10	120/117Q	1400	550	9.5
18	35X12.50R18LT	10	123Q	1550	550	11
	LT285/65R18	10	125/122Q	1650	550	10
	LT275/65R18	10	123/120Q	1550	550	9
	LT275/65R18	8	119/116Q	1360	450	9
17	35X12.50R17LT	10	125Q	1650	550	11
	LT315/70R17	10	121/118Q	1450	450	11
	LT285/70R17	10	121/118Q	1450	550	9
	LT275/70R17	10	121/118Q	1450	550	8.5
	LT265/70R17	10	121/118Q	1450	550	8.5
16	LT285/75R16	10	126/123Q	1700	550	9
	LT265/75R16	10	123/120Q	1550	550	8

MT |

# BAJA RALLY

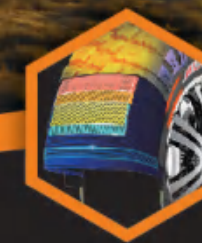
Strong Cross-country and Fearless.



**Enhance Tire Sidewall Design:**  
The enhanced side wall pattern can bear the additional impact resistance.



**Special Tread Pattern Design:**  
It ensures that there is a larger contact area when driving on uneven roads and the tires have a strong grip.



**Carcass Enhance Design:**  
The double-layer seamless crown with buffer layer to ensure the strength of the tire. Two layers of high-strength ST belt steel wire greatly improve the impact resistance of tires and the high-speed driving ability.



## BAJA RALLY

The uniquely designed high-performance UTV pattern has been tempered by harsh competitions and has performed well with remarkable results.

### FEATURES

The bionic tread pattern design optimized by computers can be self-cleaned to remove silt and sand attached to the tire when rolling.



Outstanding Wet Road Performance



Excellent Traction



Supreme Durability



All Weather



High Bearing Capacity

### Specification

UTV | 

Range	Size	PR	LI/SI	Max. Load (kg)	Max. Air Pressure (kPa)	Standard Wheel
17	40X14.50R17LT	8	121N	1450	350	11
	40X14.50R17LT	6	121N	1450	250	11
	40X13.50R17LT	8	121N	1450	350	11
	40X13.50R17LT	6	121N	1450	250	11
15	32X10.00R15LT	10	118N	1320	250	8
	32X9.50R15LT	10	118N	1320	250	8
	AT30X10.50R15	10	77N	408	140	7
	AT30X10R15	10	77N	408	140	7
14	AT30X9.50R15	10	77N	408	140	7
	AT32X10R14	10	82N	476	140	7
	AT30X11R14	10	77N	408	140	7
	AT30X10R14	10	77N	408	140	7
	AT30X9R14	10	77N	408	140	7

**UTV & ATV (bias)**



**SL386**

Size

AT20×10-9



**SL308**

Size

AT28×12-14  
AT28×10-14  
AT27×12-14



**MX618**

Size

AT34×10-17  
AT32×10-17  
AT31×10-15  
AT30×10-14



**SL288**

Size

AT26×11-12  
AT26×9-12  
AT25×10-12  
AT25×8-12  
AT22×10-10  
AT21×7-10



**SL318**

Size

AT32×10-15  
AT32×10-14  
AT30×10-14  
AT29×10-15  
AT28×10-14  
AT27×11-14  
AT27×9-14  
AT26×11-14  
AT26×9-14

# MERCHANDISE

LONG SLEEVE SHIRTS

FLAT CAP

HOODIE



T-SHIRTS

BAG

STUBBIC COOLER

POLO

